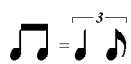


Violin II

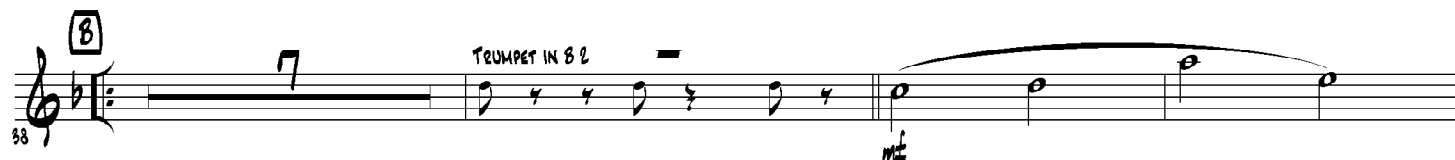
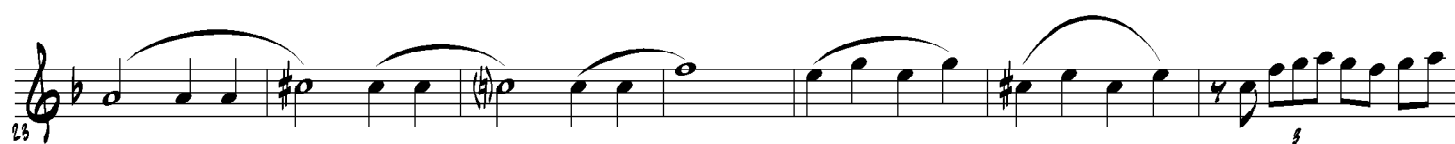
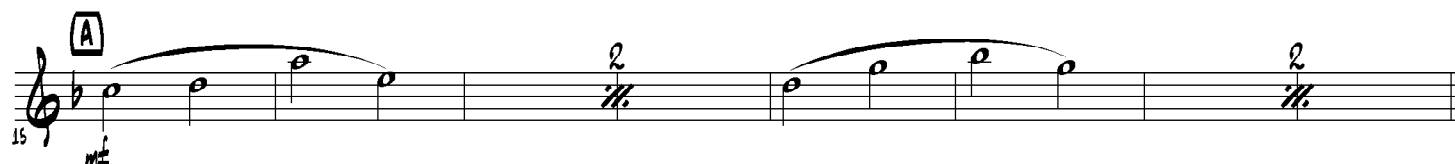
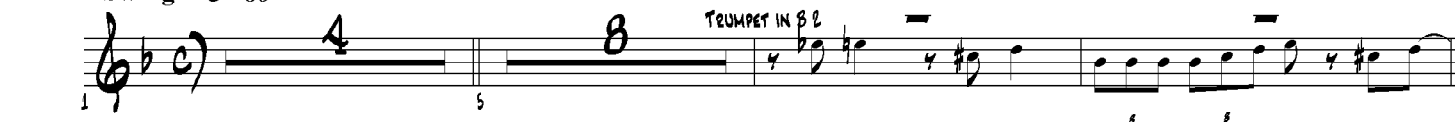
Grandioso És Tu!

"Tão-somente temei ao Senhor, e servio fielmente de todo o vosso coração; pois vede quão grandiosas coisas vos fez"(1Sm 12.24).

arr: J.Oliver Rufinus




Swing ♩ = 96



Grandioso És Tu!/Violino II

78 84

The musical score for 'The Rose Tree' is written in G major (one sharp) and 3/4 time. It begins with a treble clef and a key signature of one sharp (F#). The melody starts with a triplet of eighth notes (G4, A4, B4) followed by a quarter note (C5), a half note (B4), and a quarter note (A4). The melody then continues with a quarter note (G4), a half note (F#4), and a quarter note (E4). The piece concludes with a double bar line, followed by a repeat sign and two endings. The first ending is a quarter note (G4) leading to a double bar line. The second ending is a quarter note (G4) leading to a double bar line.

90  Cadência/Piano

98 **E** ou Feliz



Musical notation for the piece 'E ou Feliz' in Sem Swing style. The notation is on a single staff with a treble clef, a key signature of two sharps (F# and C#), and a 4/4 time signature. The melody consists of a series of eighth and quarter notes, starting on a middle C and ending on a half note. The tempo/style is indicated as 'Sem Swing'.

103

Musical score for 'The Rose Tree' in G major, 2/4 time. The melody is written on a single staff. It begins with a treble clef, a key signature of one sharp (F#), and a common time signature (C). The melody consists of the following notes: G4 (quarter), A4 (quarter), B4 (quarter), C5 (quarter), B4 (quarter), A4 (quarter), G4 (quarter), F#4 (quarter), E4 (quarter), D4 (quarter), C4 (half). The piece ends with a double bar line.

112

p

[illegible]